

# THREATQ™ AND NSFOCUS

With the combination of NSFOCUS and the ThreatQ Threat Intelligence Platform (TIP), organizations can minimize their risk and improve their overall security posture.

NSFOCUS provides crucial threat intelligence and enriched data to the ThreatQ Platform which enable customers to keep updated with the most relevant intelligence to accelerate security operations.

## THREATQ BY THREATQUOTIENT™

ThreatQ is an open and extensible threat intelligence platform (TIP) to provide defenders the context, customization and collaboration needed for increased security effectiveness and efficient threat operations and management. ThreatQ accelerates the transformation of threat data into actionable threat intelligence by giving defenders unmatched control through a Threat Library™, an Adaptive Workbench™ and an Open Exchange™ to ensure that intelligence is accurate, relevant and timely to their business. With ThreatQ, customers can automate much of what is manual today and get more out of existing security resources, both people and infrastructure.

## NSFOCUS

NSFOCUS' threat intelligence subscription feeds provide information in four crucial areas and is constantly updated with the latest threat intelligence information gathered from our global sensors and verified by our threat researchers:

### IP REPUTATION

This is a list of IP addresses that have earned a negative reputation through involvement in suspicious activity, including phishing attacks, spam, botnets, DDoS attacks, APT attacks and more.

### MALICIOUS WEB/URL

This is a domain reputation list that includes malicious websites that are the source of malware or phishing attacks.

## INTEGRATION HIGHLIGHTS

NSFOCUS provides data-rich threat intelligence used to augment IP reputation, Command and Control servers, malicious URL and malware hash indicators within the ThreatQ Threat Library.

Combining NSFOCUS' Risk Score, Threat Level and other Indicators of Compromise (IOC) with ThreatQ's Scoring System, you can prioritize threats and reduce noise.

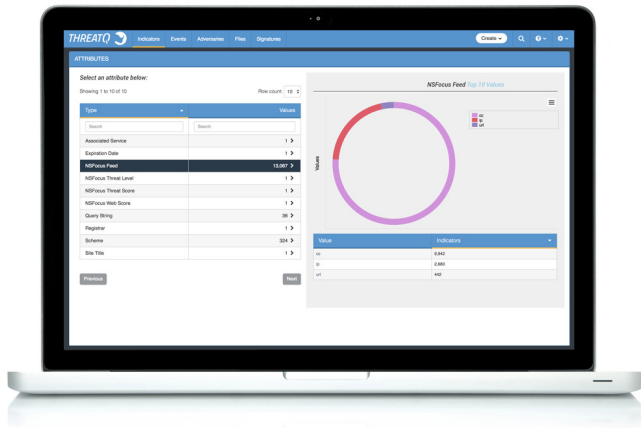
NSFOCUS' in-depth categorization, along with ThreatQ's robust search function, allows you to easily find IOCs that pertain to your organization and quickly act on them.

COMMAND & CONTROL DATA FEED

This is a set of IP addresses that are known to control botnet armies used to take services offline.

MALWARE DATA FEED

This is a set of MD5 file hashes that can be used to identify malware in email or file transfers, as well as stored data.



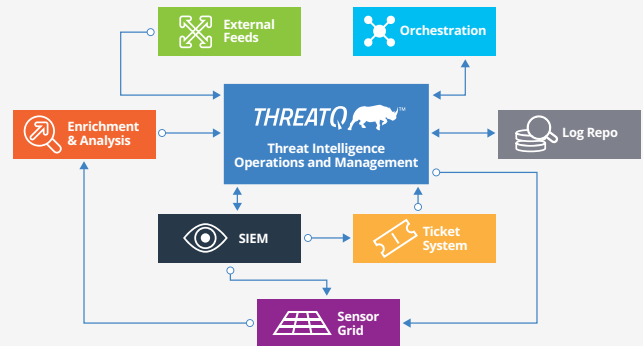
**INTEGRATION USE CASES**

The integration supports a variety of use cases, such as:

- Importing IOCs from NSFOCUS' IP, C&C, URL and malware intelligence feeds for creating blacklists
- Enriching and relating indicators using NSFOCUS' "details" with the Threat Library
- Customizing feeds and enrichment from NSFOCUS within the ThreatQ platform based on the needs of your organization

OPEN EXCHANGE ARCHITECTURE

ThreatQ's Open Exchange provides an extensible and flexible environment for analysts to achieve the optimal balance between system automation and expert analysis. Because no single security solution provides a silver bullet against attacks, ThreatQ's Open Exchange architecture supports standard interfaces for ingestion and exporting, including STIX/TAXII, XML, JSON, PDF, email and other formats of structured and unstructured data, along with an SDK and APIs for custom connections.



ABOUT THREATQUOTIENT™

ThreatQuotient understands that the foundation of intelligence-driven security is people. The company's open and extensible threat intelligence platform, ThreatQ™, empowers defenders to ensure the right threat intelligence is utilized within the right tools, at the right time. Leading global companies are using ThreatQ as the cornerstone of their threat intelligence operations and management system, increasing security effectiveness and efficiency.

For additional information, please visit [threatq.com](http://threatq.com).

Copyright © 2017, ThreatQuotient, Inc. All Rights Reserved.

ABOUT NSFOCUS

NSFOCUS IB is a wholly owned subsidiary of NSFOCUS, an award-winning enterprise application and network security provider, with operations in the Americas, Europe, the Middle East and Asia Pacific. NSFOCUS IB has a proven track record of combating the increasingly complex cyber threat landscape through the construction and implementation of multi-layered defense systems. The company's Intelligent Hybrid DDoS Defenses strategy utilizes both cloud and on-premises security platforms, built on a foundation of real-time global threat intelligence, to provide unified, dynamic protection from advanced cyber threats. For more information, visit [nsfocusglobal.com](http://nsfocusglobal.com).